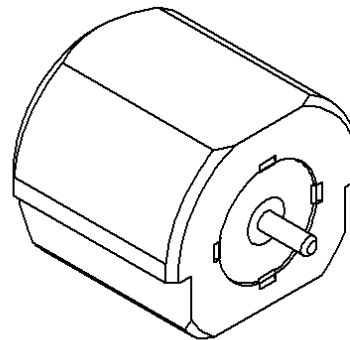
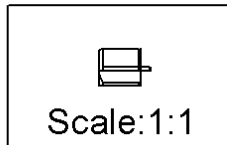
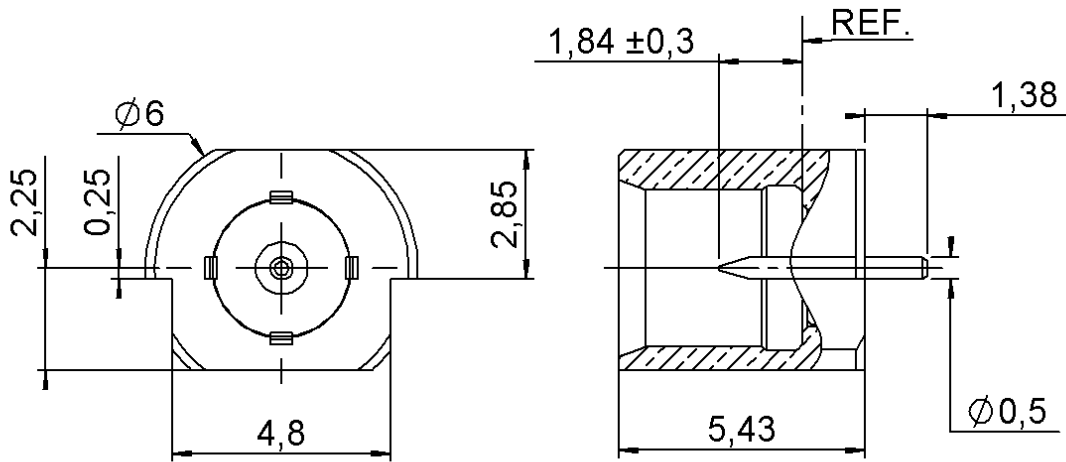


STRAIGHT JACK RECEPTACLE FOR PCB

SMT TYPE - EDGE CARD - REEL OF 1000

R300.113.800

Series :
REV.POLARITY



All dimensions are in mm.



COMPONENTS	MATERIALS	PLATING (µm)
BODY	BRASS	GOLD 0.2 OVER NICKEL 2
CENTER CONTACT	BRASS	GOLD 0.5 OVER NICKEL 2
OUTER CONTACT	-	-
INSULATOR	PTFE	-
GASKET	-	-
OTHERS PARTS	-	-
-	-	-
-	-	-

Issue : 0641 B

In the effort to improve our products, we reserve the right to make changes judged to be necessary.



STRAIGHT JACK RECEPTACLE FOR PCB

R300.113.800

SMT TYPE - EDGE CARD - REEL OF 1000

Series :
REV.POLARITY

PACKAGING

SPECIFICATION

Standard	Unit	Other
1000	'W' option	Contact us

ELECTRICAL CHARACTERISTICS

ENVIRONMENTAL

Impedance	50	Ω
Frequency	0-6	GHz
VSWR	1.05 + 0,0150	x F(GHz) Maxi
Insertion loss	0.03	$\sqrt{F(GHz)}$ dB Maxi
RF leakage	- (NA)	- F(GHz)) dB Maxi
Voltage rating	335	Veff Maxi
Dielectric withstanding voltage	1000	Veff mini
Insulation resistance	1000	M Ω mini

Operating temperature	-55/+155	$^{\circ}$ C
Hermetic seal	NA	Atm.cm3/s
Panel leakage	NA	

OTHER CHARACTERISTICS

Assembly instruction

Others :
Coaxial transmission line only

MECHANICAL CHARACTERISTICS

Center contact retention		
Axial force – Mating end	10	N mini
Axial force – Opposite end	10	N mini
Torque	NA	N.cm mini
Recommended torque		
Mating	NA	N.cm
Panel nut	NA	N.cm
Mating life	1000	Cycles mini
Weight	0,7230	g

Issue : 0641 B

In the effort to improve our products, we reserve the right to make changes judged to be necessary.

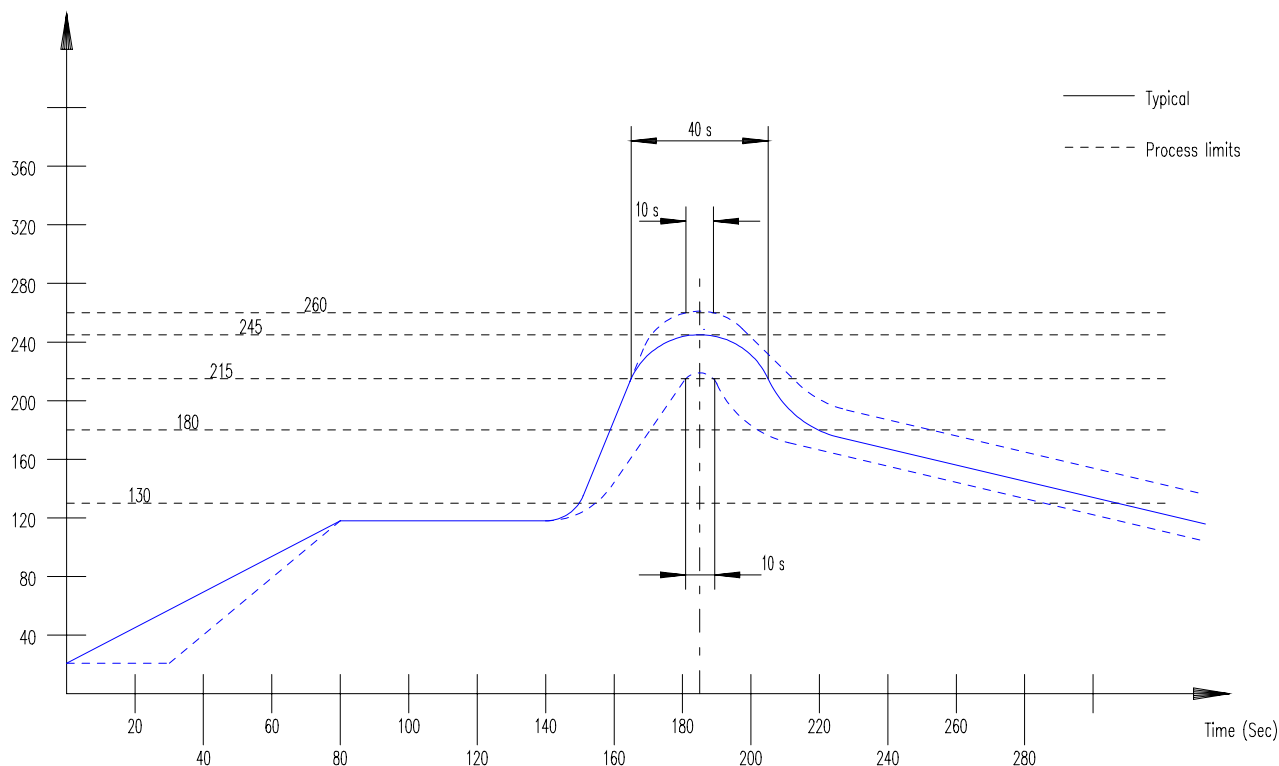


STRAIGHT JACK RECEPTACLE FOR PCB**R300.113.800****SMT TYPE - EDGE CARD - REEL OF 1000**Series :
REV.POLARITY**SOLDER PROCEDURE**

1. Deposit solder paste 'SN62RP11AGS90' on mounting zone by screen printing application. We recommend a low residue flux.
We advise a thickness of 150 micromm (5.850 microinch). Verify that the edges of the zone are clean.
2. Placement of the receptacle on the mounting zone with an automatic machine of 'pick and place' type.
3. Soldering by infra-red reflow.
4. Cleaning of printed circuit boards.
5. Checking of solder joints and position of the component by visual inspection.

TEMPERATURE PROFIL

Temperature (Degre C)

**Issue : 0641 B**

In the effort to improve our products, we reserve the right to make changes judged to be necessary.



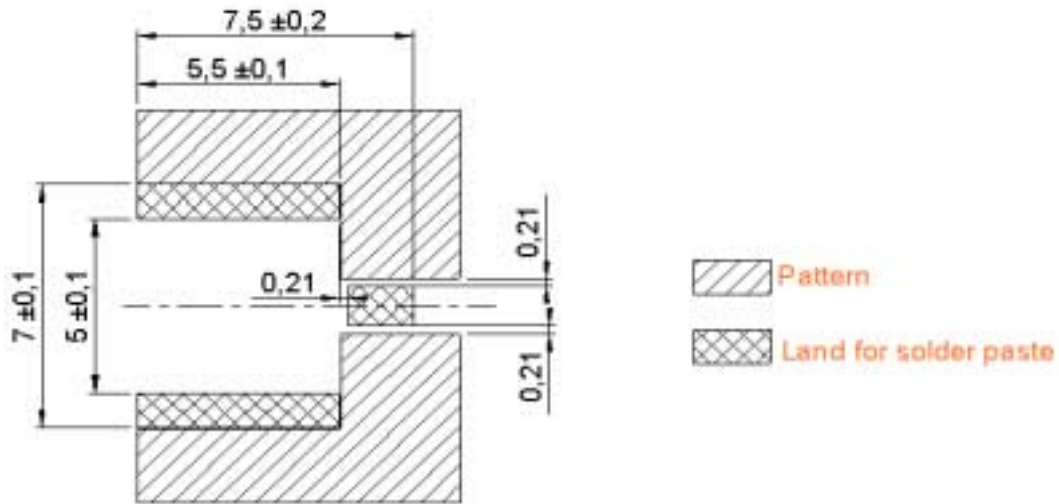
STRAIGHT JACK RECEPTACLE FOR PCB

SMT TYPE - EDGE CARD - REEL OF 1000

R300.113.800

Series :
REV.POLARITY

MCX SERIES - INFORMATIONS



COPLANAR LINE

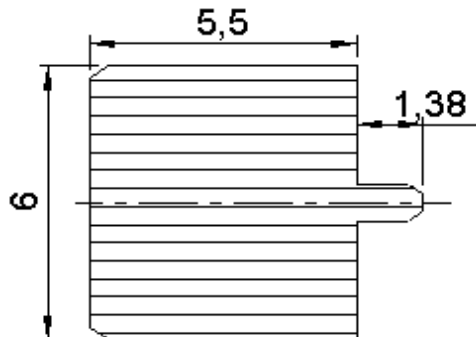
Pattern and signal are on the same side

Thickness of PCB : 1.6mm

The material of PCB is the epoxy resin of glass fabrics bacs.(En -4.8)

The solder resist should be printed except for the land pattern on the PCB.

SHADOW OF MCX RECEPTACLE FOR VIDEO CAMERA



Issue : 0641 B

In the effort to improve our products, we reserve the right to make changes judged to be necessary.



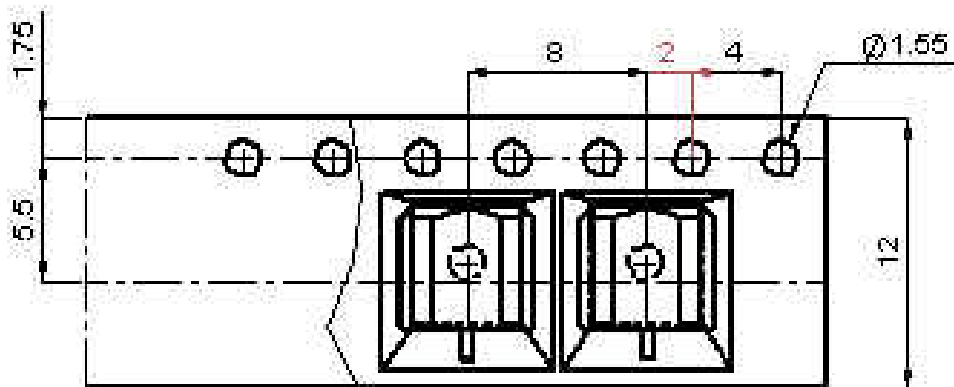
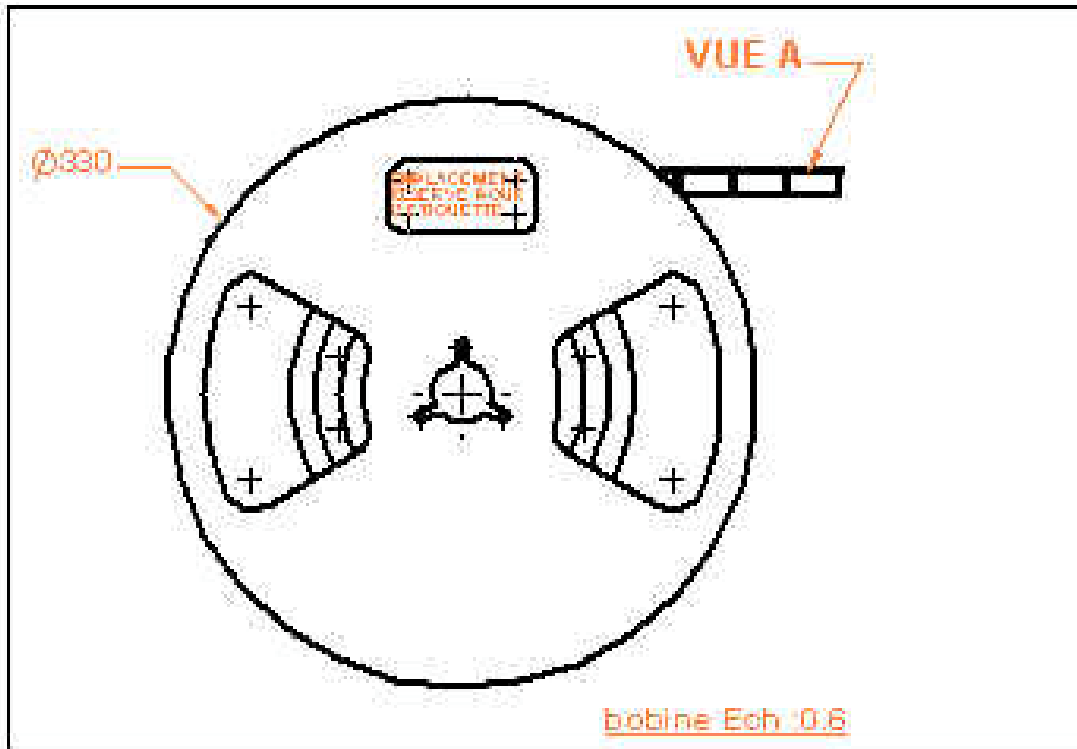
STRAIGHT JACK RECEPTACLE FOR PCB

SMT TYPE - EDGE CARD - REEL OF 1000

R300.113.800

Series :
REV.POLARITY

PACKAGING : REEL OF 1000



Issue : 0641 B

In the effort to improve our products, we reserve the right to make changes judged to be necessary.

